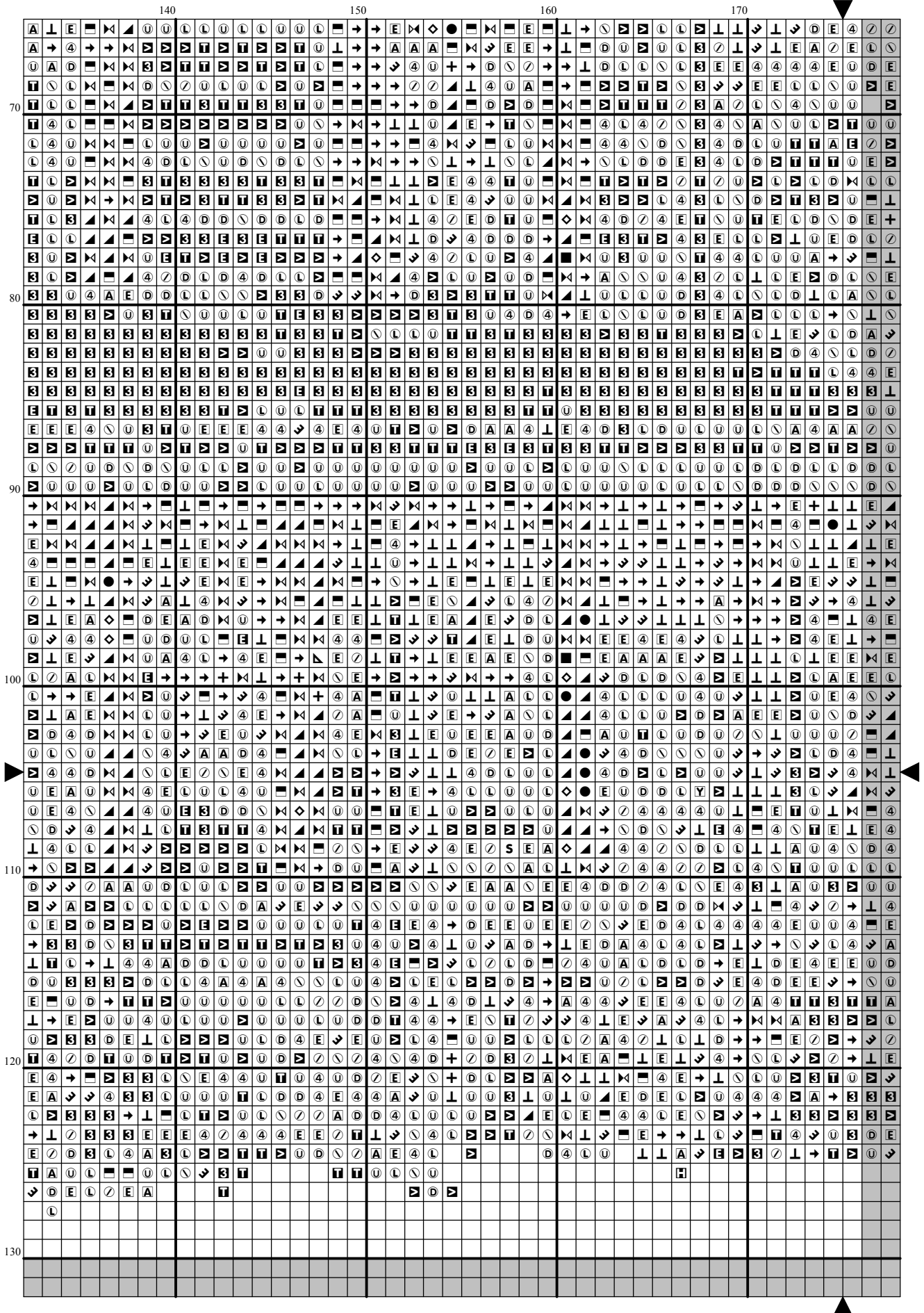
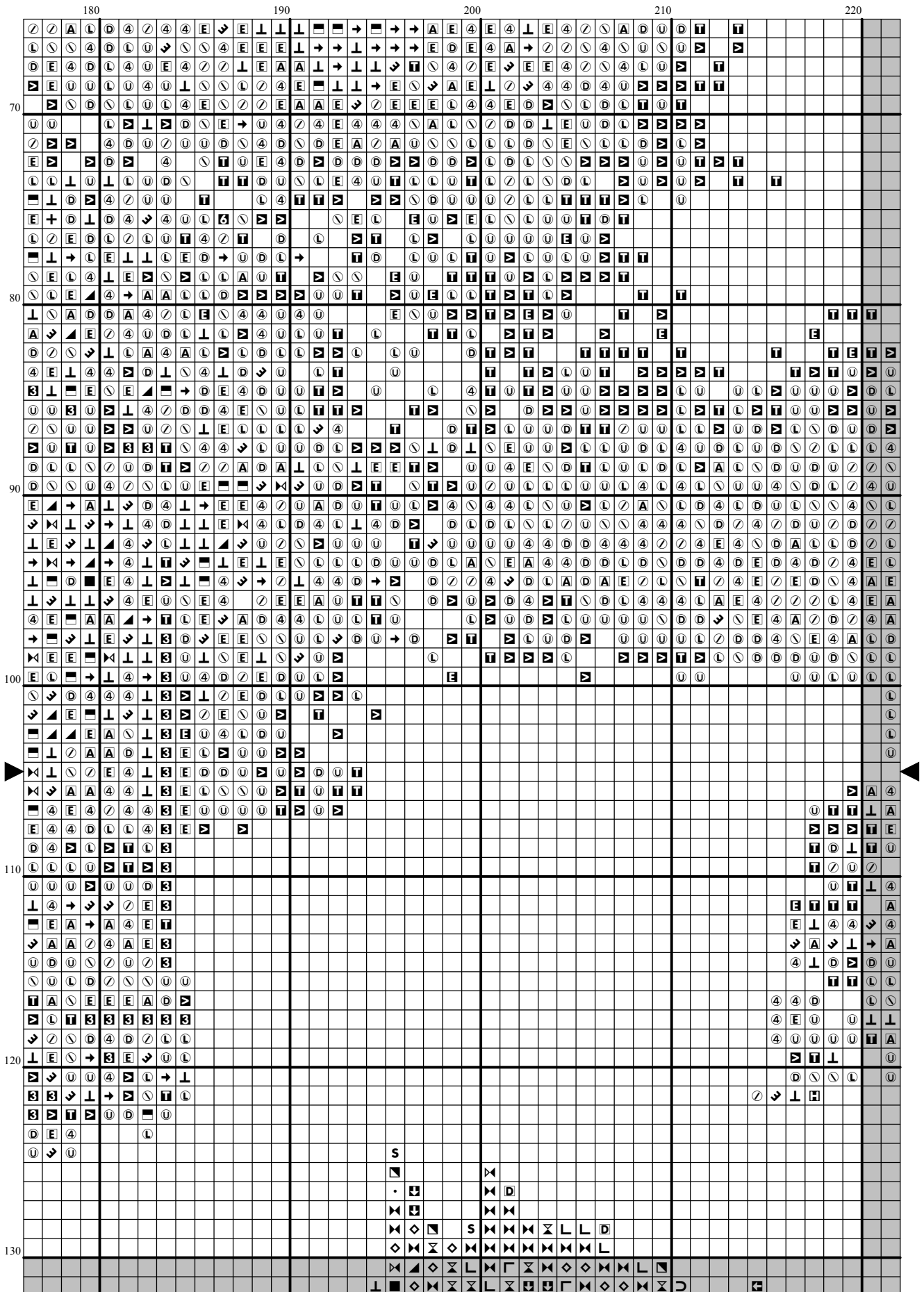
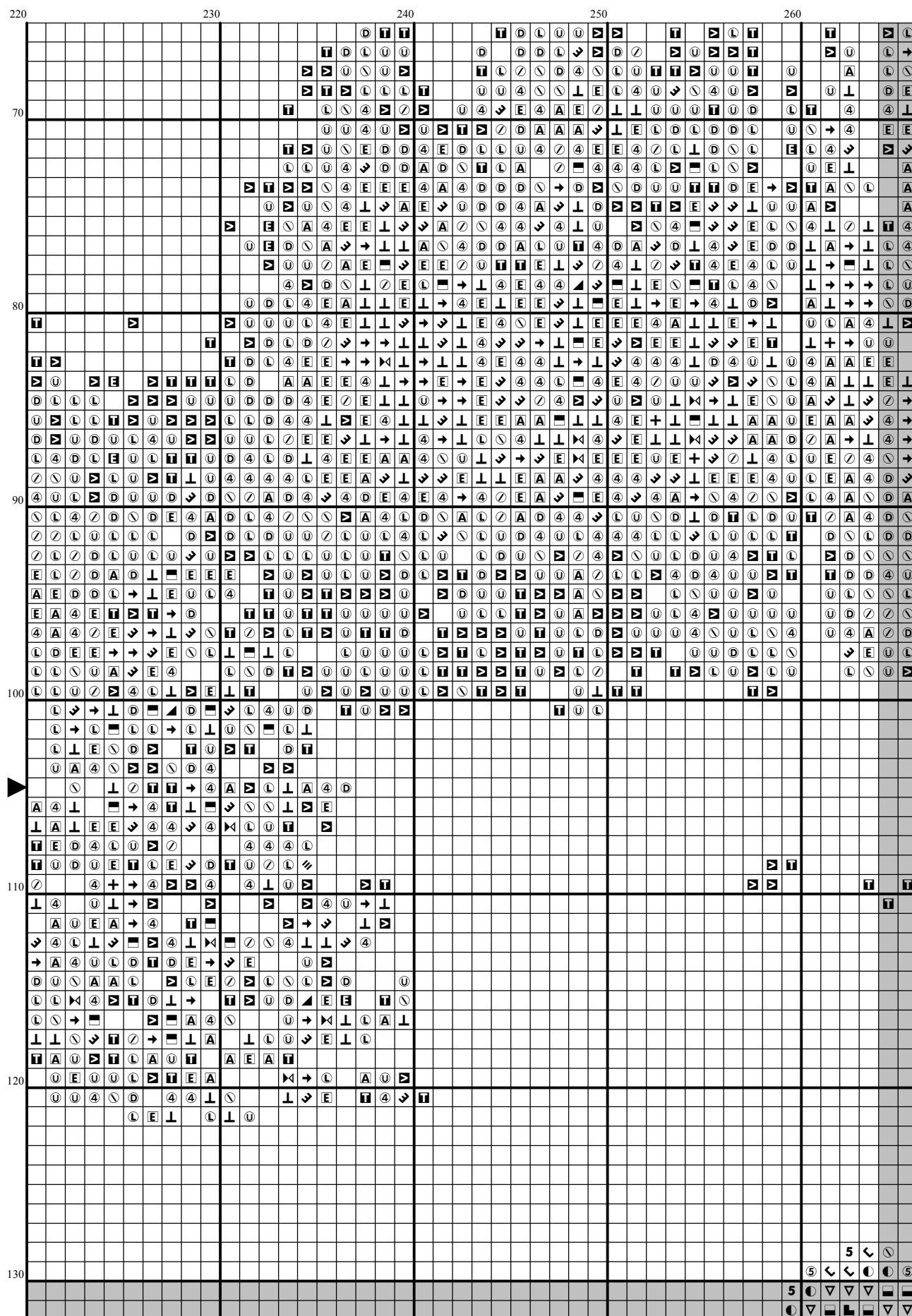
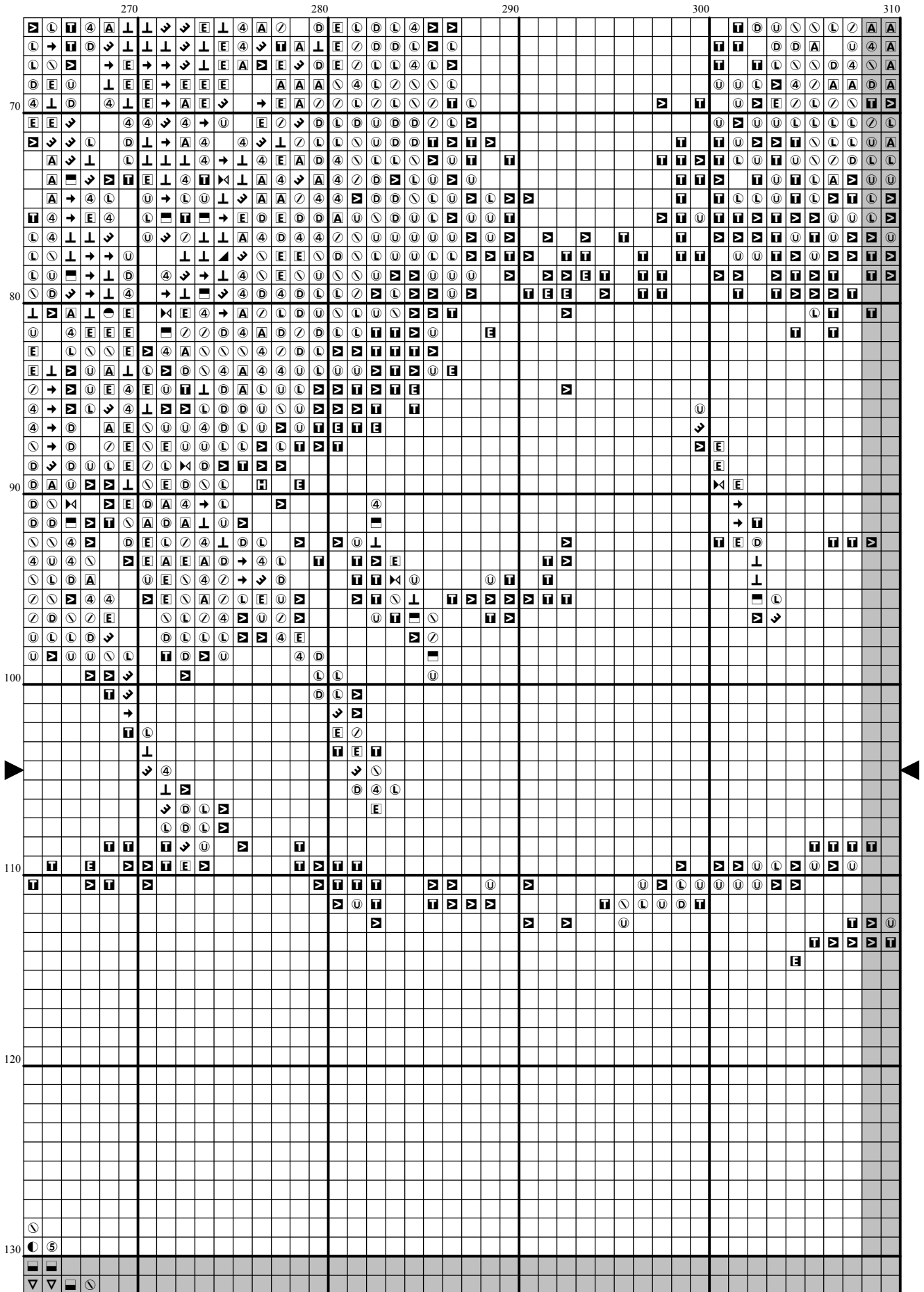


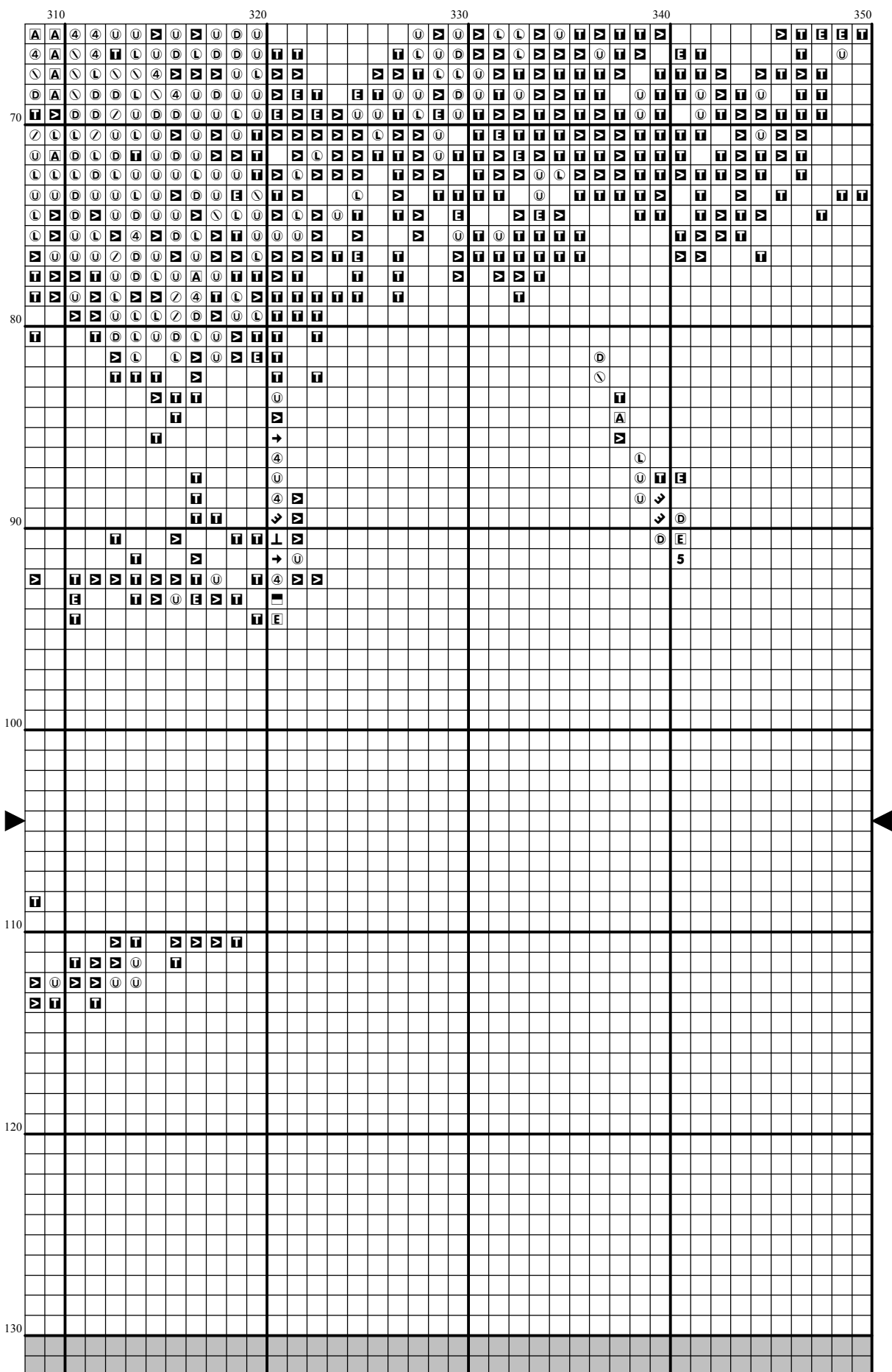
④ → / \ U U / ④ ④ D ↘ L ↘ ↘ \ ④ T D A ④ / D ④ \ E T A ④ \ ④ \ E ④ E T U E E ④ U ⊥ / ⊥ → ▸ ④ ◀



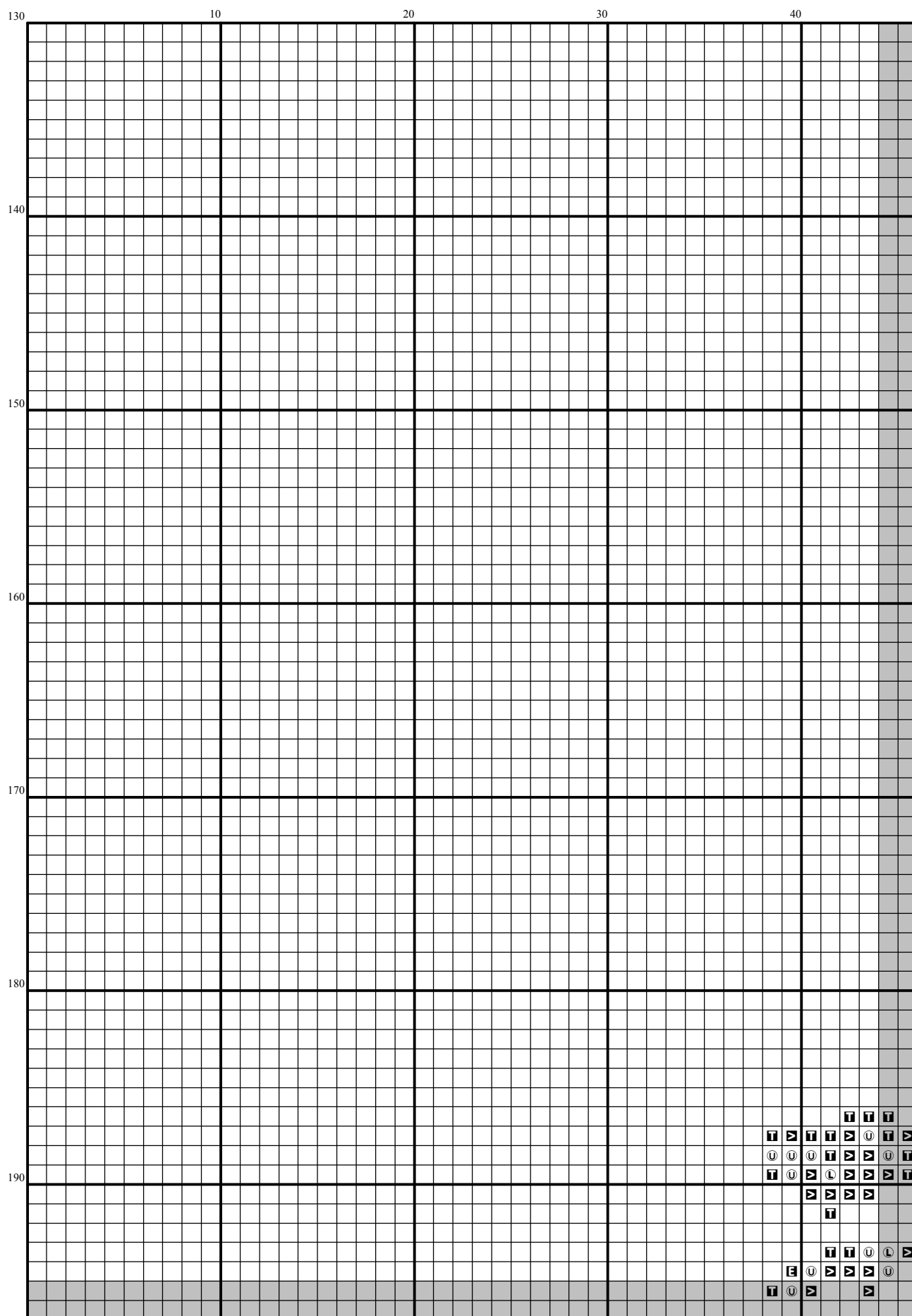


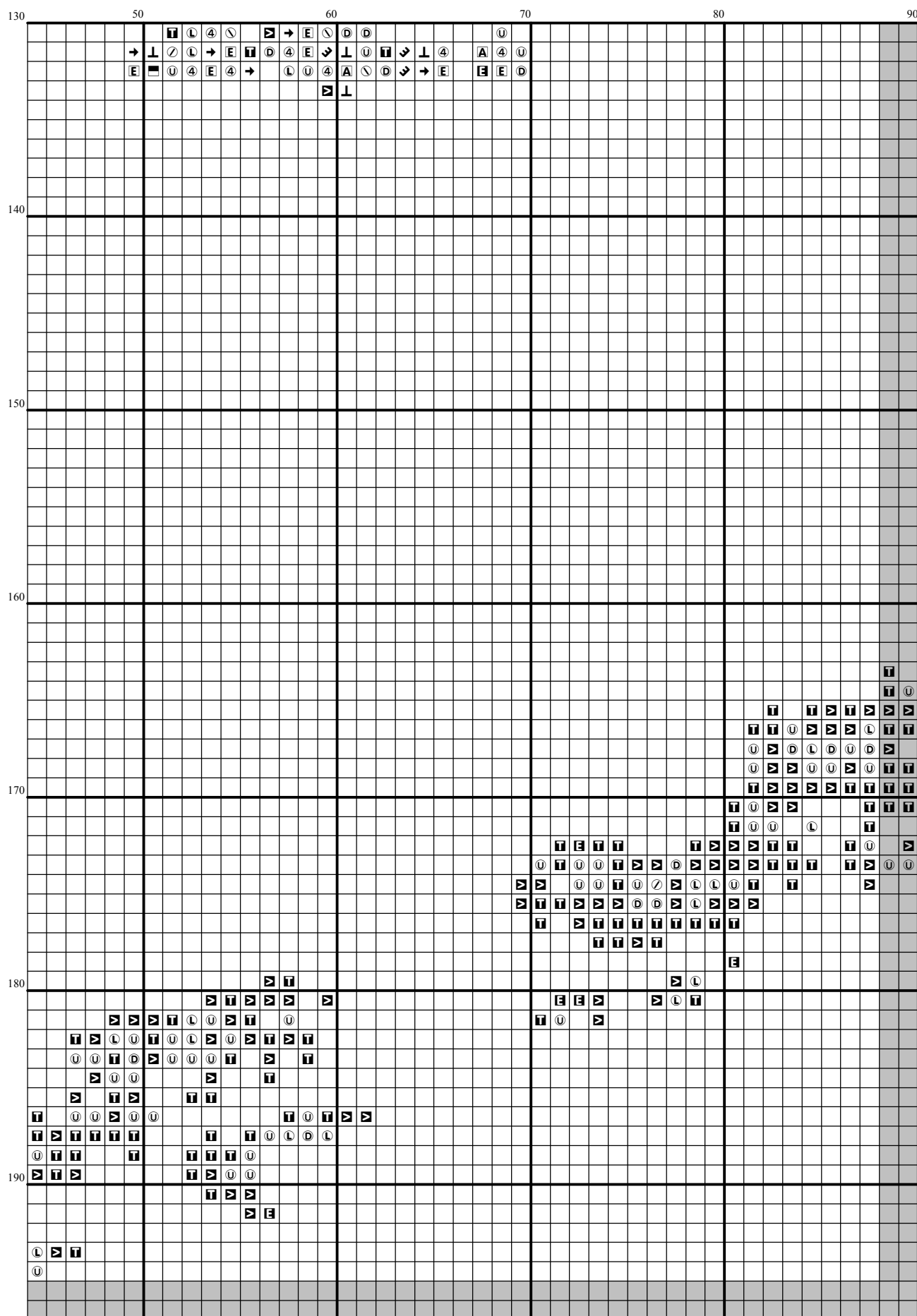


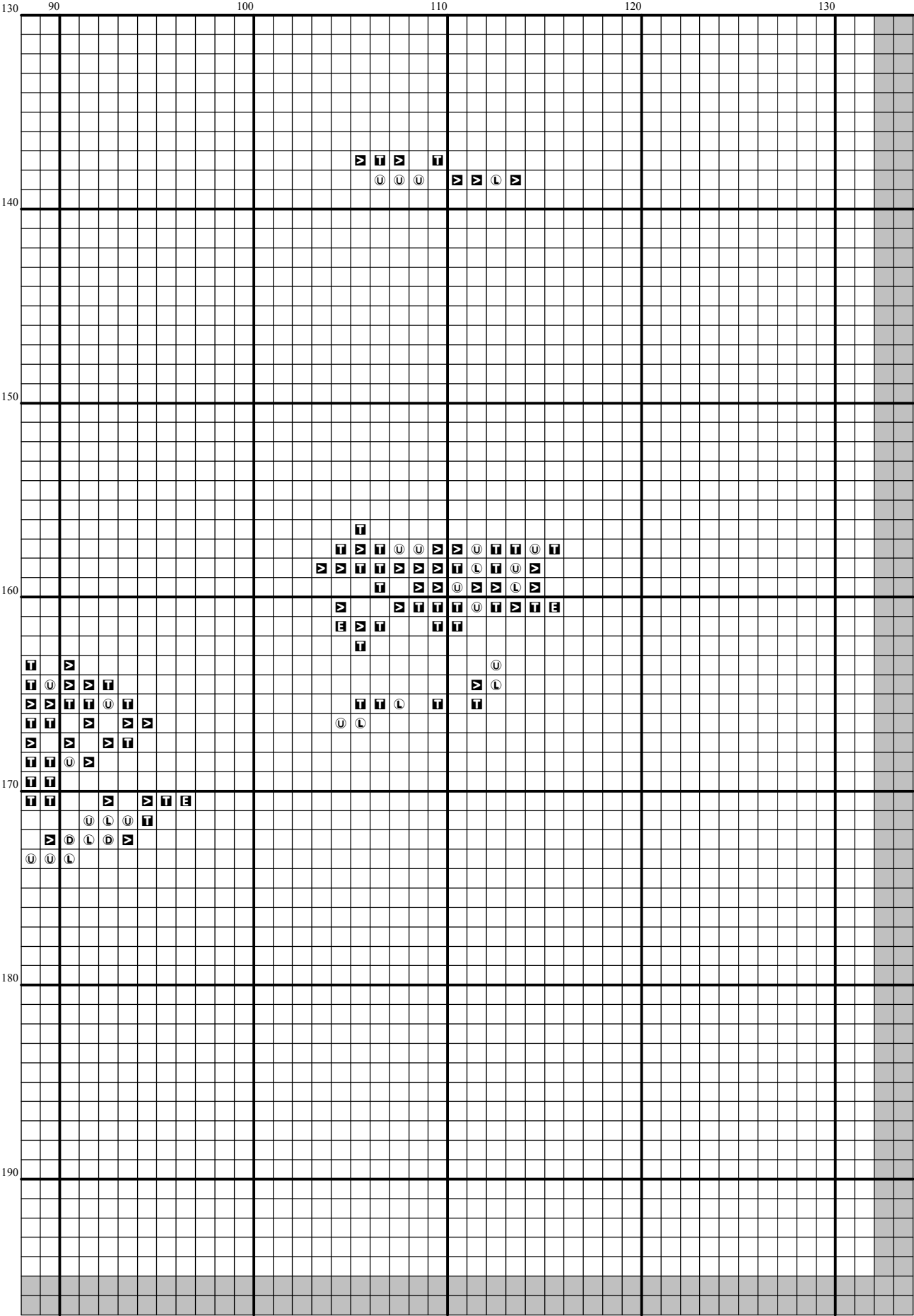


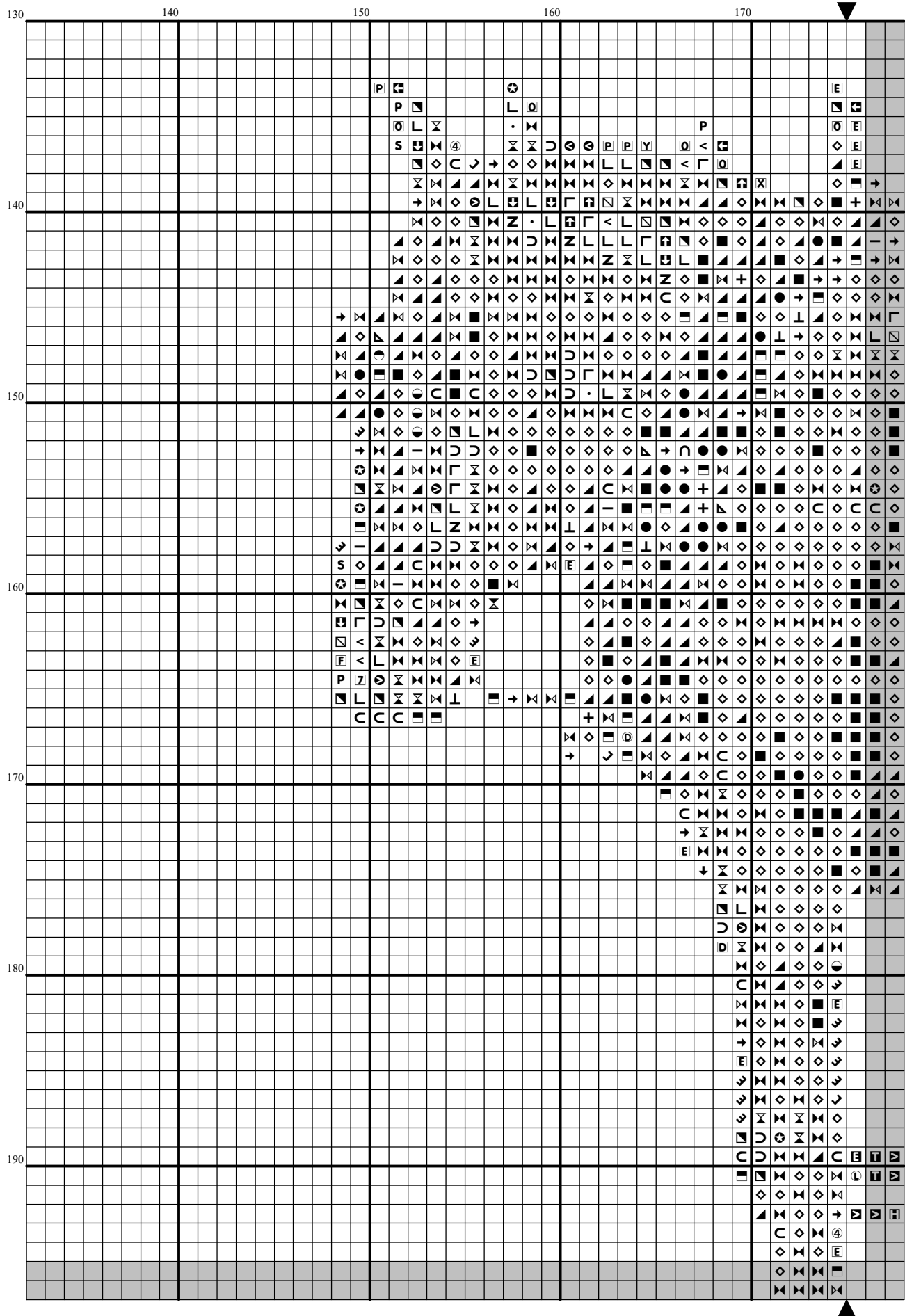


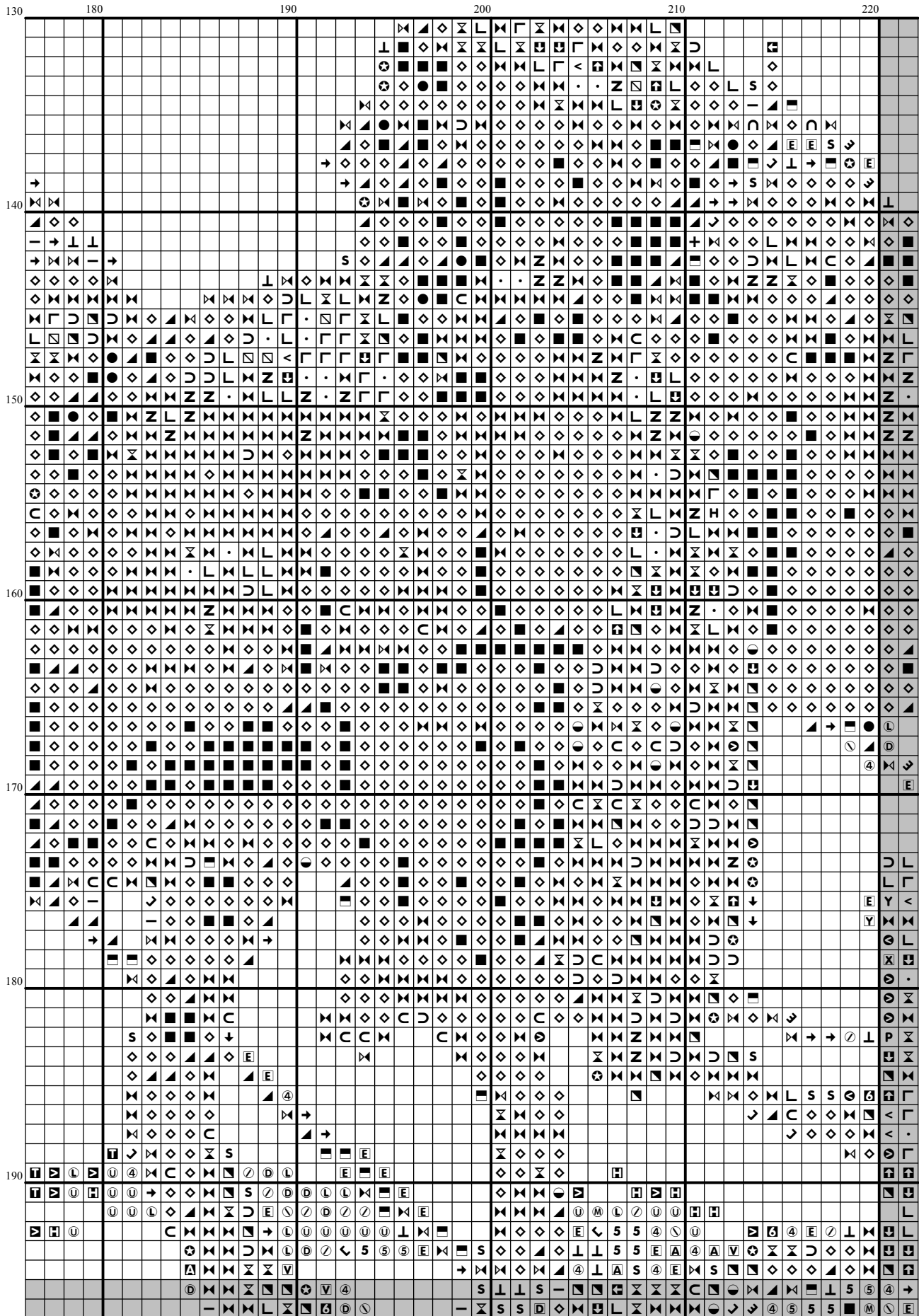




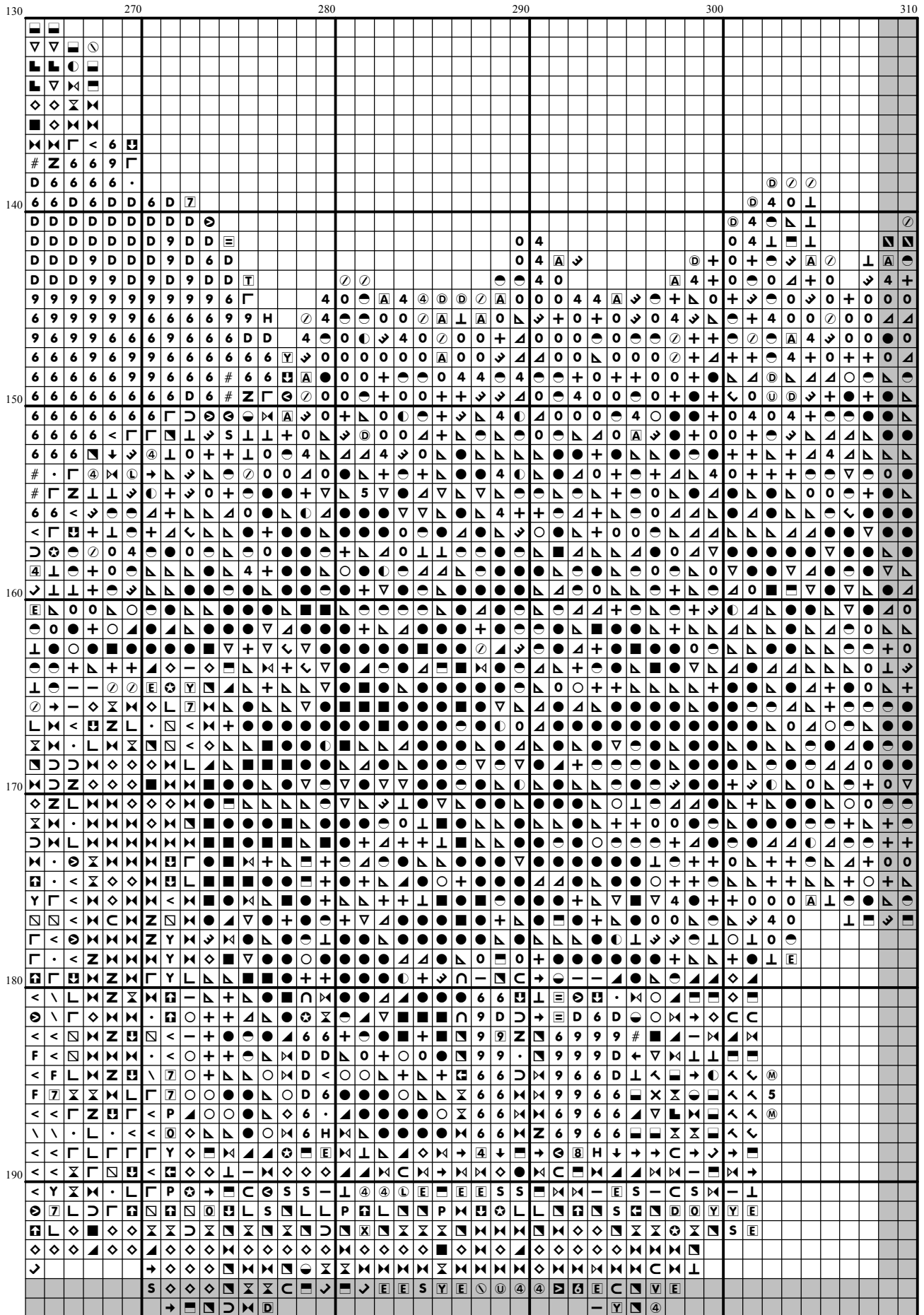


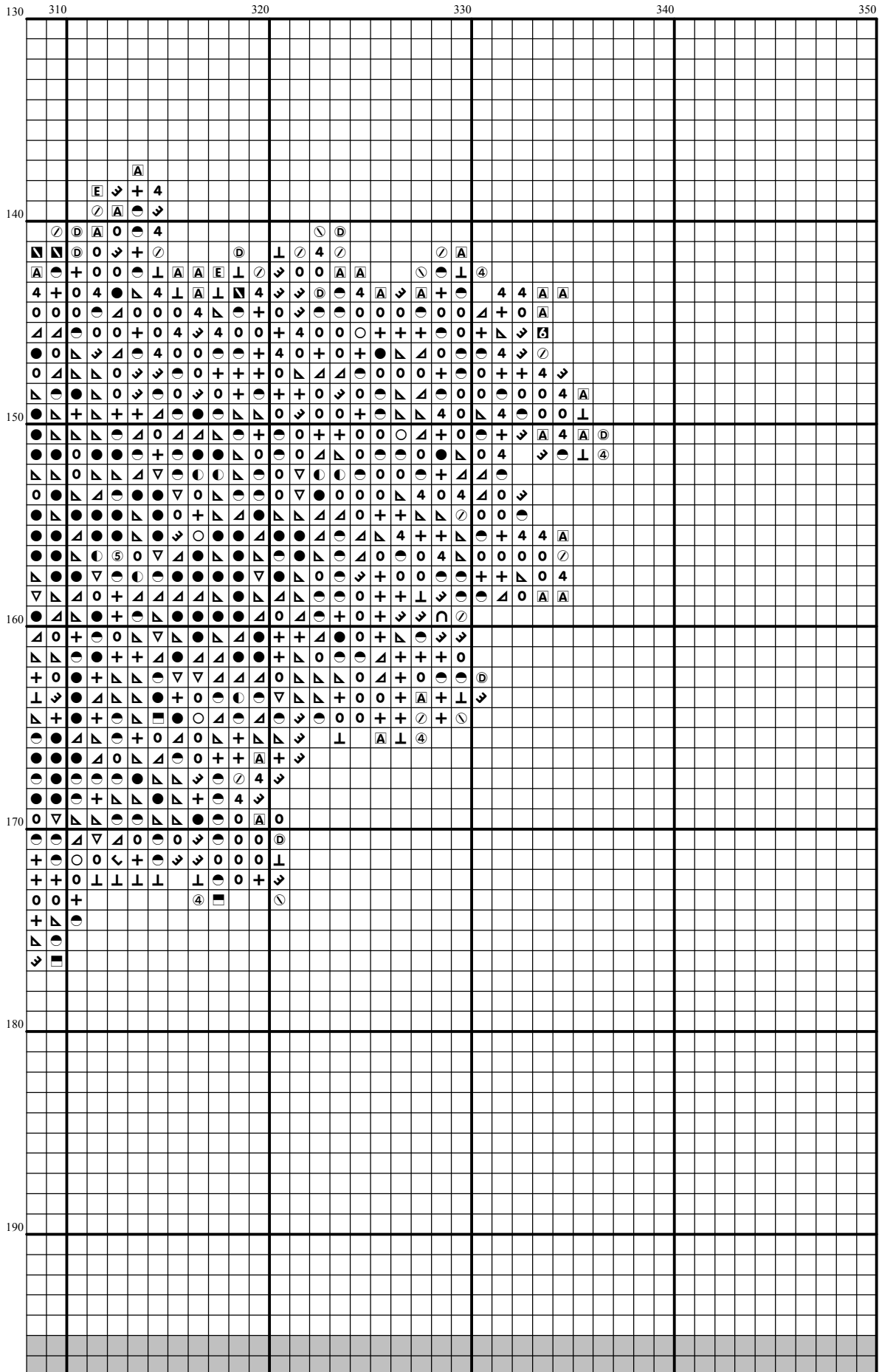




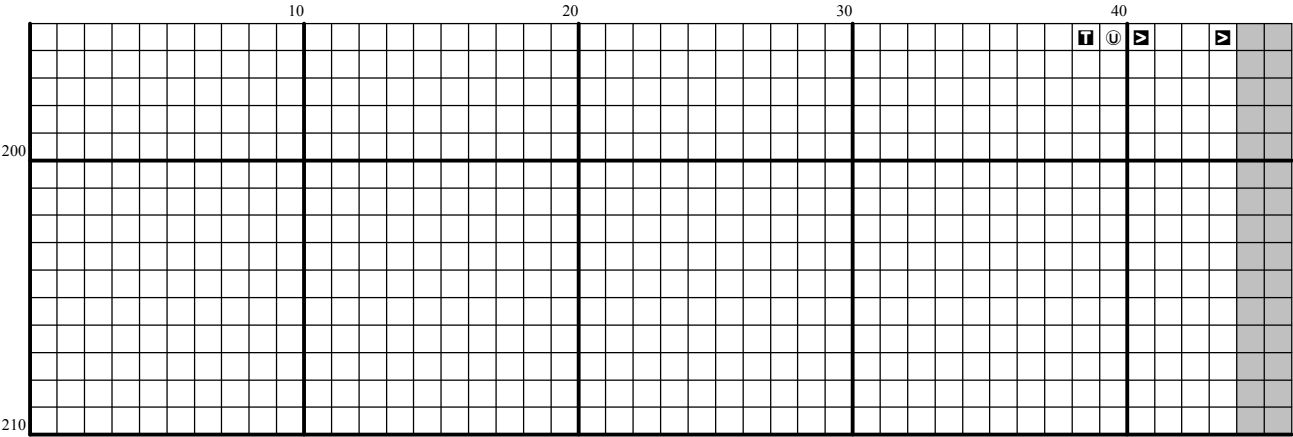


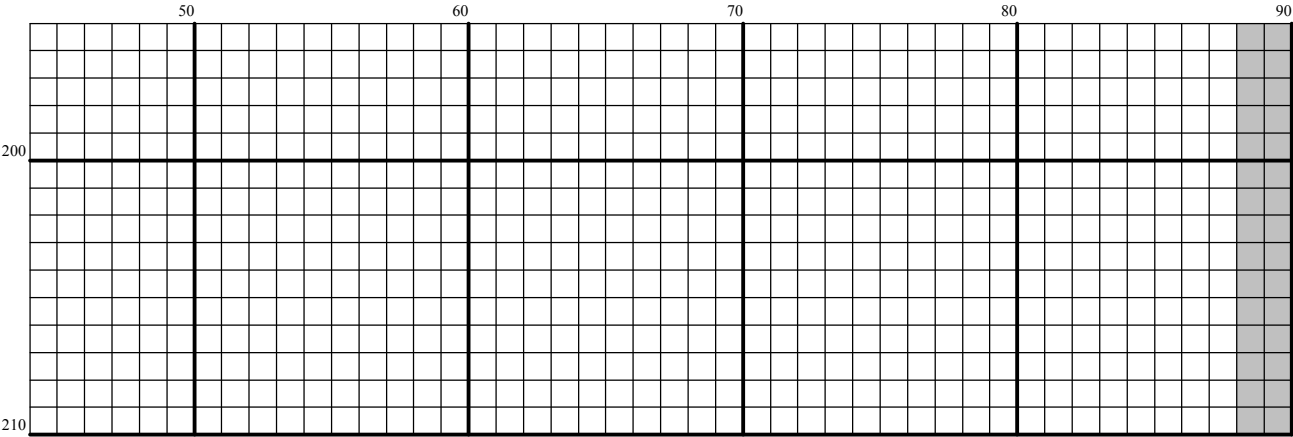
[illegible]

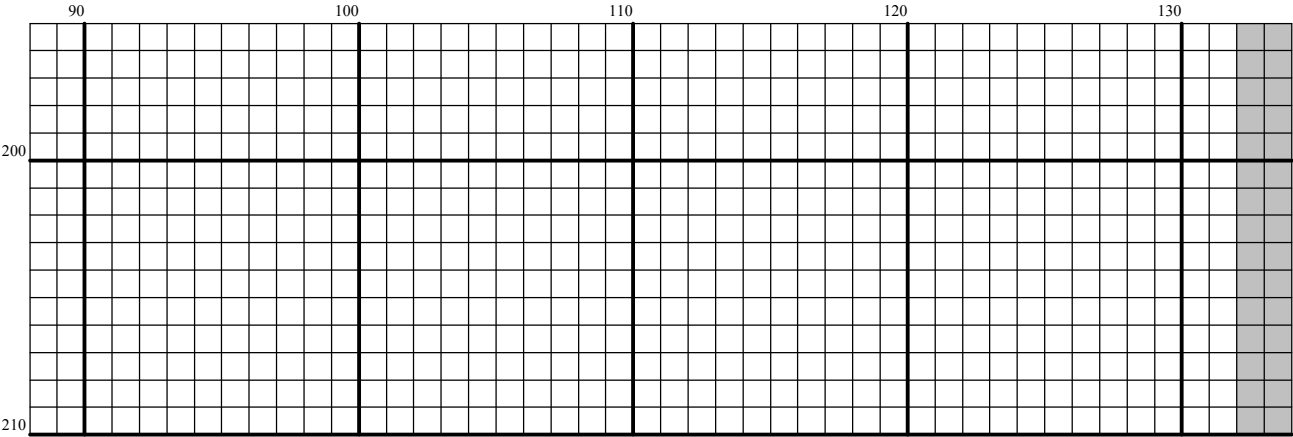


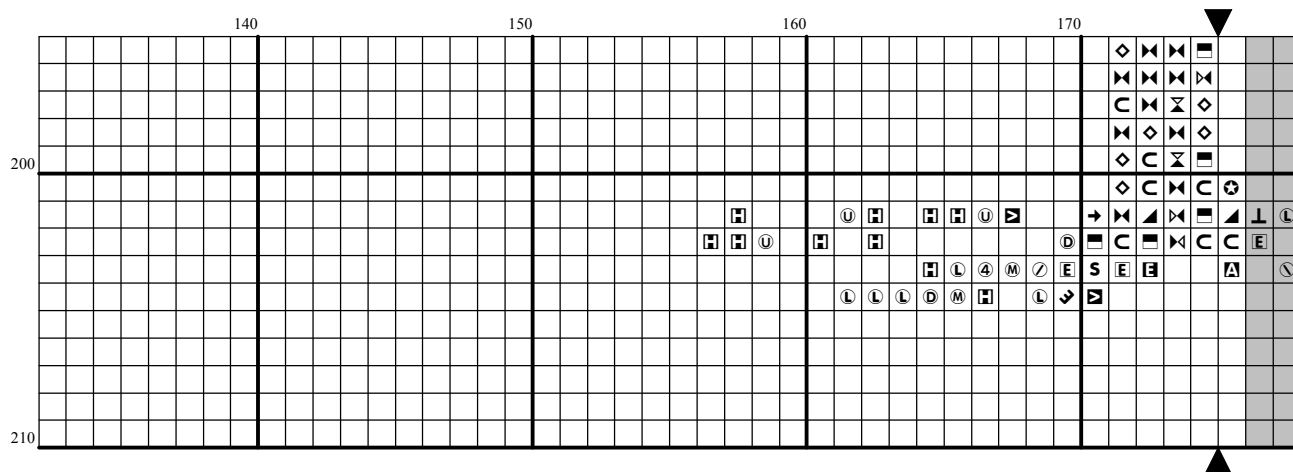








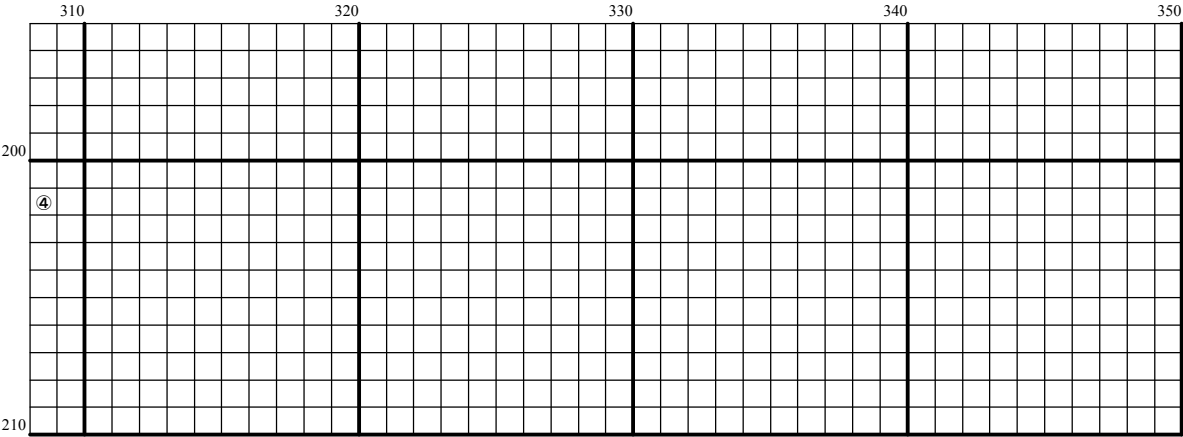




[illegible]

[illegible]

[illegible]





## Instructions and Symbol Key for Design "New227 Coming Home"

**Fabric:** 14 count white Aida

**Stitches:** 350 x 207      **Size:** 25.00 x 14.79 inches or 63.50 x 37.56 cm

**Colours:** DMC

Use **2** strands of thread for cross stitch

Sym	No.	Colour Name	Sym	No.	Colour Name
Ⓜ	168	Mouse grey	↙	169	Pewter grey
#	221	Mars red	•	300	Mahogany
■	310	Black	▣	317	Steel grey
5	318	Granite grey	○	320	Fern green
D	356	Medium terracotta	△	367	Bay leaf green
4	368	Nile green	▤	369	Bamboo leaf green
⌘	370	Medium mustard	P	371	Green plains
F	372	Light mustard	8	407	Clay brown
⚡	414	Lead grey	⦶	415	Chrome grey
<	420	Hazelnut	U	422	Light oak
Z	433	Chocolate brown	↘	451	Shell pink grey
2	453	Turtledove grey	▽	501	Pond green
●	502	Blue green	▲	523	Ash green
⦶	524	Light green green	⊗	535	Stone grey
⌒	610	Dark golden brown	▤	611	Sisal brown
0	612	String brown	⊗	613	Rope brown
⊗	640	Green grey	S	642	Earth grey
Y	644	Light green grey	▣	645	Dark steel grey
→	646	Platinum grey	↘	647	Rock grey
④	648	Pepper grey	F	680	Dark old gold
⌘	712	Cream	⊗	730	Khaki green
⌘	762	Pearl grey	\	780	Chestnut tree brown
A	782	Wicker brown	▲	822	Cotton cream
L	830	Green oak brown	▤	831	Green bronze
C	839	Root brown	↓	840	Hare brown
4	841	Deer brown	▼	842	Beige rope
⌘	869	Coffee brown	●	890	Deep forest green
○	895	Bottle green	⊗	898	Teak brown
9	900	Saffron orange	6	919	Red copper
9	920	Ochre copper	⌘	921	Burnt ochre orange
L	924	Dark pearl green	5	927	Oyster grey
⦶	928	Light pearl grey	↖	931	Blue grey
▲	934	Algae green	⊗	936	Oaktree moss green
+	987	Basil green	—	3011	Artichoke green
⌘	3012	Marsh green	P	3013	Resin green
⌒	3022	Elephant grey	E	3023	Light platinum grey
⦶	3024	Pale steel grey	D	3032	Dark antique silver
6	3033	Antique silver	Y	3045	Coffee cream
①	3047	Silver birch beige	⌒	3051	Olive tree green
⌘	3064	Cinnamon brown	⦶	3072	Pale pearl grey
▲	3345	Dark Hunter Green	⊗	3362	Fig tree green
●	3363	Herb green	⦶	3371	Ebony
←	3726	Dark antique mauve	⊗	3768	Storm grey
H	3772	Rosy tan	⦶	3782	Gingerbread brown
●	3790	Cappuccino brown	7	3828	Oaktree brown
⌘	3862	Mocha brown	⦶	3863	Otter brown
T	3864	Light mocha brown	⌘	3866	Garlic cream
8	Unused	Unused	E	ECRUT	ECRUT



This chart has been designed and printed with our best intentions of being without mistakes. However, the possibility of human error, printing mistakes or the variation of individual stitching does exist, and we regret that we cannot be responsible for this.

Note: The shaded blocks on the chart represent overlapping stitches.  
Copyright © Classic cross Stitch 2006 All rights reserved.